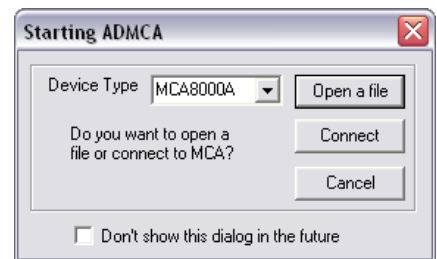



MCA8000A Software Installation Procedure

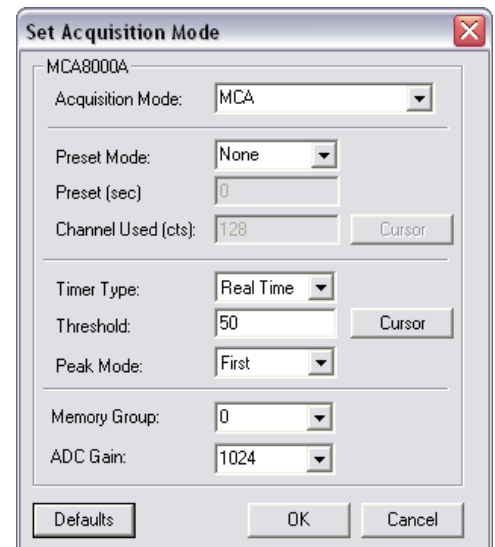
Insert the CD into your computer. Locate the ADMCA directory on the CD and copy it to your local drive (e.g. C:\ADMCA). Browse to the ADMCA directory on your drive and create a shortcut for the ADMCA.exe file (right-click and select create shortcut) and copy it to your desktop. Click on this shortcut to open the ADMCA application. If you wish to use the USB to RS232 converter you must install the driver for the converter before plugging in the adapter into your computer. The USB to RS232 converter has its own software installation disk and is also included on the Amptek CD. Put in the CD and locate the driver for your operating system. Once the driver has been installed, plug in the USB adapter. Windows will now locate and install the driver. The USB adapter acts like a virtual RS232 port. To find the Port number go to Start -> Control Panel -> System -> Device manager -> Hardware tab -> Device Manager. Locate and expand the Ports section. Remember the port assigned to the USB adapter. You will need to input this number in ADMCA.


Quick Start Guide

Open the ADMCA software. The 'Starting ADMCA' dialog will appear. Select MCA8000A from the Device Type menu. To open a file select Open a File. To Connect to the MCA8000A select Connect. If the MCA is not on, the software will turn it on within 3 seconds and then connect. If you are using the MCA8000A on a COM Port other than COM 1, you must change the default setting in the View menu, Preferences, MCA tab. If you are using the USB to RS232 adapter you must enter in the correct port number that you found in Device Manager.




All the MCA8000A acquisition parameters are in the 'Set Acquisition Mode' dialog. This dialog is accessible from the toolbar , the MCA pull down menu under Acquisition Setup, or by pressing <F9> on the keyboard. Click the Defaults button on the bottom and then OK. For more information about the specific acquisition parameters see the Help File (F1).



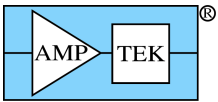
Press the Start/Stop button  on the toolbar. The MCA begins its acquisition and the red light flashes on the front panel of the unit. You will see the screen updating with the spectrum. To stop acquisition, press the Start / Stop button on the toolbar. The Space Bar is the keyboard shortcut for starting and stopping data acquisition. For a list of keyboard shortcuts, go to the Help menu and select Keyboard Map.

Info Pane

The Info Pane displays the current status of the MCA and Peak Information if a Region of Interest (ROI) has been set. To set an ROI click on the Edit ROI button on the toolbar. The mouse cursor has now changed to . To set an ROI left-click and drag the mouse over the desired region. An ROI has now been set. Additional ROIs can be set by the same left-click and drag. To exit the Edit ROI cursor mode click the Edit ROI button on the toolbar. The cursor has now changed back to the normal cursor. If the cursor is clicked in an ROI the Info Pane will display the Peak Information for that ROI. You can also set an ROI with the keyboard shortcuts U and Y.

Select Pane

The Select Pane displays cursor information (channel location and counts in that channel), x and y-axis range settings, and the scale of the spectrum (linear, square root, and log). At the right end of the Select Pane there are four arrows. The up and down arrows are the same as the up and down arrows on the keyboard and change the y-axis range. The left and right arrows change the x-axis range. The left and right arrows on the keyboard move the cursor through the spectrum channel by channel.



MCA8000A Software

ADMCA

This application is the main display and acquisition software for the MCA8000A. It is compatible with Windows 98SE/ME/NT/2000/XP/VISTA. Before running the software for the first time read the MCA8000A Quick Start Guide on the other side of this sheet. The Help File (press F1) is the primary resource, there is no paper manual. For specifications see the web site at <http://www.amptek.com/mca8000a.html>. Keep in mind that the ADMCA software controls all Amptek devices. Some functionality may only be applicable to the other devices.

MCA8000A APPLICATION PROGRAMMING INTERFACE (API):

The API libraries are compatible with Windows 95/98/ME/NT/2000/XP/VISTA. The libraries, with their supporting files, examples, and documentation, are in the MCA8000A API directory on the CD. These libraries are used to write custom code to control the MCA8000A.

OTHER PLATFORMS:

Go to the Amptek website at <http://www.amptek.com/mcasoft.html> for information on other platforms. There are no Amptek applications that support the MAC or Unix related operating systems.

XRF-FP Quantitative Analysis Software

The XRF-FP Quantitative Analysis Software is an additional purchase from Amptek. To install the software, browse the CD to the Quantitative Analysis (XRF-FP) directory and launch the setup.exe file. Once installed the security plug must be used in order to run the software. Install the XRF-FP software into the same directory as the ADMCA application.

Amptek, Inc.
14 Deangelo Drive, Bedford, MA 01730 USA
Tele: (+1) 781-275-2242, Fax: (+1) 781-275-3470
sales@amptek.com, www.amptek.com